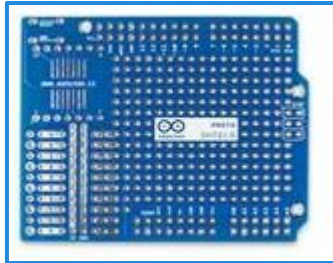


Build an Arduino Shield Target Board

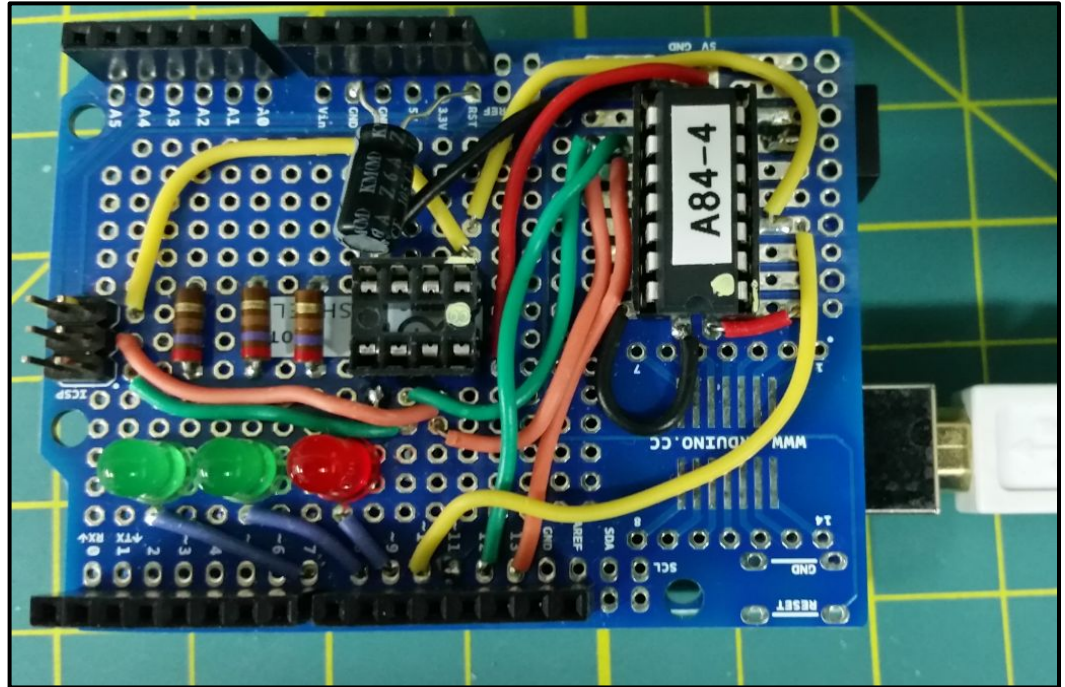
Embedded Workshop 8/26/2015

Build an Arduino Target Board

Arduino Target
Board Shield for
ATtiny 84/85
Arduino as ISP



Proto Shield

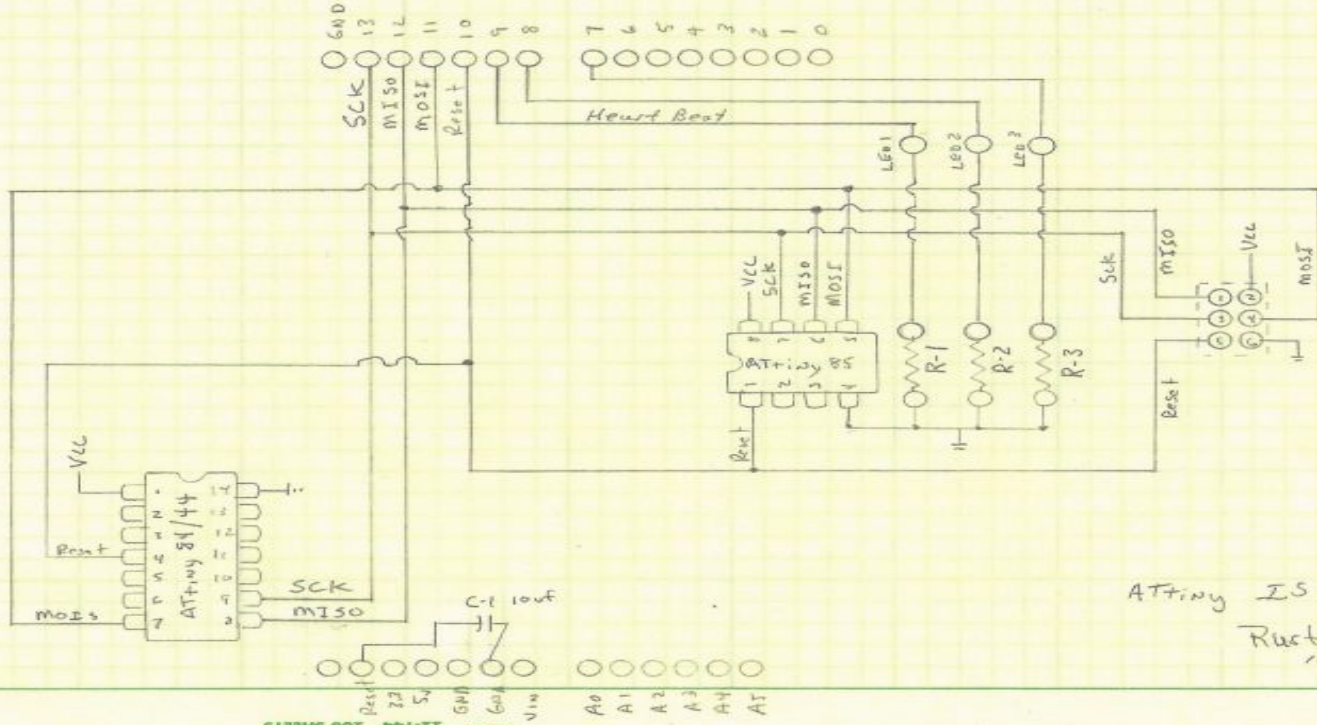


ISP to ATtiny84/85 Pinout

Arduino	ISP	Atiny85/45	
13	3	7	SCK
12	1	6	MISO
11	4	5	MOSI
10	5	1	Reset
VCC	2	8	VCC
GND	6	4	GND

Arduino	ISP	Atiny84/44	
13	3	9	SCK
12	1	8	MISO
11	4	7	MOSI
10	5	4	Reset
VCC	2	1	VCC
GND	6	14	GND

ATtiny 84/85 ISP Shield



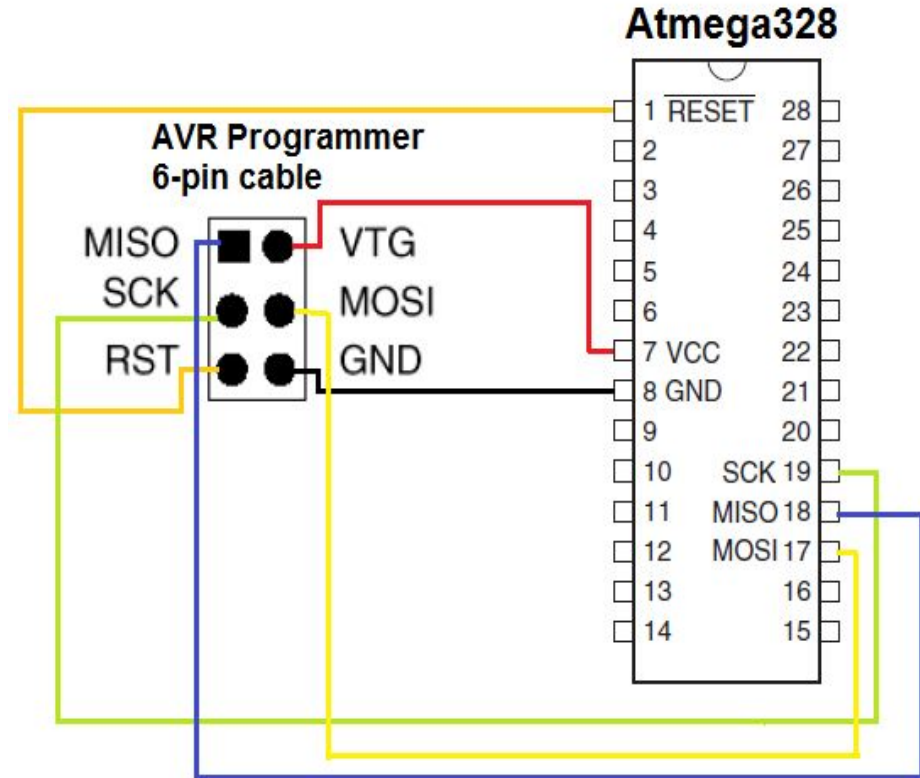
32-141 50 SHEETS
32-142 100 SHEETS
32-143 200 SHEETS
32-144 300 SHEETS



ATmega328 Target Board

Target Board Pinout for Atmega328

ISP	Atmega	Label
1	18	MISO
2	07	VCC
3	19	SCK
4	17	MOSI
5	01	RST
6	08	GND



Purchased a Target board

